



Rockwell

MANUFACTURING COMPANY

The Rockwell Building • Pittsburgh, Pa.

422-04-655-5005

DATED IM 6-25-66

PM-1878

34-471 SUPER-SAFE GUARD

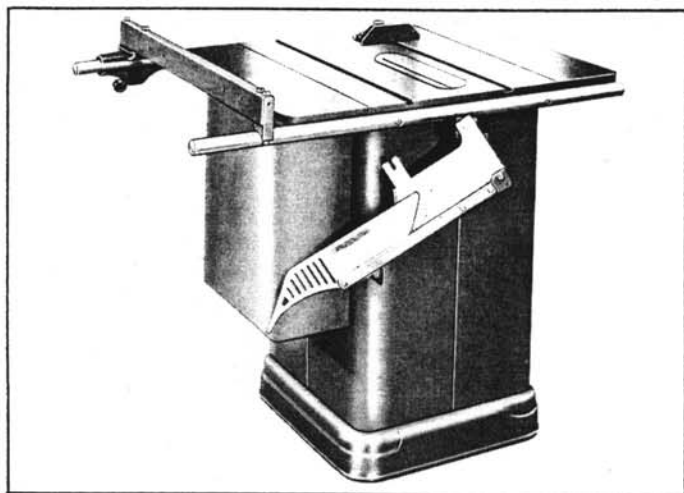


Fig. 1.

INSTALLATION

To mount the 34-471 Super-Safe Guard to your Unisaw, proceed as follows:

Refer to the parts drawing for all reference numbers referred to in the following steps.

1. Remove the saw blade and mount splitter bracket post (42), into rear trunnion. Tighten nut (44) securely.
2. Assemble splitter bracket (40) to post (42), and tighten so the vertical face of the adjustable bracket (39) is parallel to the saw arbor flange.
3. Assemble the splitter mounting bracket (60) and (61) to the rear trunnion.
4. Assemble the splitter (28) and guard assembly to the two splitter mounting brackets (39) and (60).

ADJUSTMENTS

Before using the saw, be sure to check the alignment of the splitter. It is important that the splitter is aligned perfectly with the saw blade in order to avoid cramping. It is also important that the rip fence be perfectly parallel to the saw blade and splitter. If any misalignment occurs, make the necessary adjustments to prevent the work from leading away from the rip fence or binding against it. Most splitters are flexible enough to follow the saw cut without difficulty; however this splitter is made rigid and any slight misalignment will cause difficulty. Therefore, be sure to adjust properly as follows:

1. The front splitter bracket (60) is adjusted by loosening the two cap screws that hold it to the rear trunnion. Oversize holes allow sufficient lateral movement to assure proper alignment.

2. The rear splitter bracket (39) can be shifted by loosening the cap screw (37).

ANTI-KICKBACK FINGERS

The splitter has four anti-kickback fingers. These fingers can be released at will without the necessity of having the operators hands come close to the saw blade. A small hook shaped part extends upward through the guard, which can be tripped without danger.

TO SWING GUARD OUT OF THE WAY

When it is intended to swing the entire saw guard assembly from the top of the table, proceed as follows:

1. Disconnect saw from power source.
2. Remove the saw table insert, reach down and loosen screw in the front splitter mounting bracket.
3. Loosen both screws (35) and (37) in rear bracket (39).
4. Assemble items (50, 51, 52, 53, and 54) to the hole in the rear of the saw cabinet. NOTE: On Unisaw cabinets, as shown in Fig. 2, which do not have the rectangular hole, it is necessary to drill and tap a 1/4-20 hole in the rear of the cabinet, at the dimensions shown in Fig. 2.

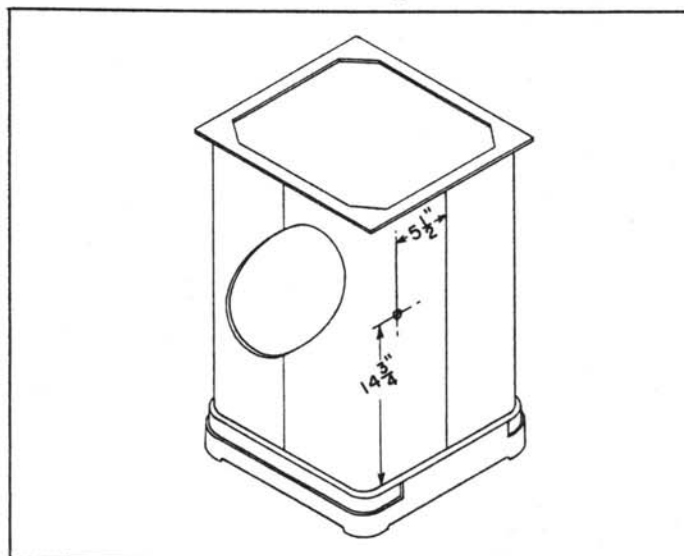
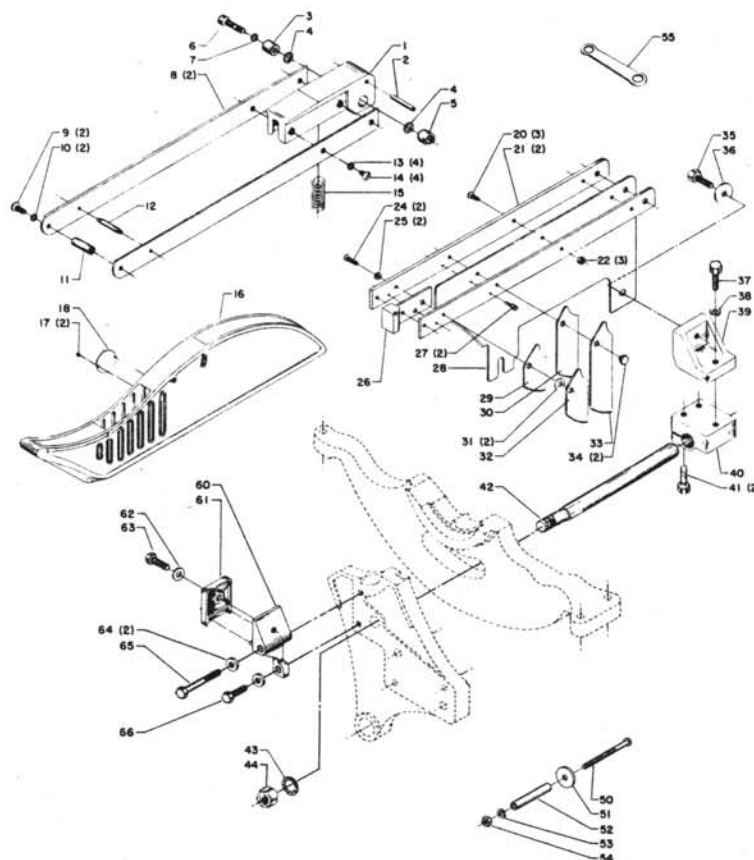


Fig. 2.

5. The entire saw guard can then be swiveled and lowered to the back of the saw cabinet onto sleeve (52), as shown in Fig. 1.



Replacement Parts

Ref. No.	Part. No.	Description	Ref. No.	Part. No.	Description
1	LTA-592-S	Hinge, Incl:	32	LTA-549	Kickback Finger
2	SP-2708	3/16 x 1 1/4 Roll Pin	33	LTA-547	Kickback Finger
3	LTA-543	31/64 x 5/8 x 15/32 Bushing	34	LTA-540	Brass Bushing
4	SP-1656	5/16 Ext. Tooth Lockwasher	35	SP-608	5/16-18 x 7/8 Hex Hd. Screw
5	LTA-542	5/16-18 Threaded Bushing	36	SF-16	21/64 x 1-1/16 x 3/32 Washer
6	SP-707	5/16-18 x 1 Filister Hd. Screw	37	SP-608	5/16-18 x 7/8 Hex. Hd. Screw
7	SP-1752	5/16 Int. Tooth Lockwasher	38	SP-1703	5/16 Lockwasher
8	LTA-537	Arm	39	TAS-202	Upper Splitter Bracket
9	SP-509	1/4-20 x 1/2 Rd. Hd. Screw	40	TAS-203	Lower Splitter Bracket
10	SP-1665	1/4 Ext. Tooth Lockwasher	41	SP-608	5/16-18 x 7/8 Hex. Hd. Screw
11	LTA-544	1/4-20 Threaded Bushing	42	LTA-539	Stud
12	LTA-545	Stop Spacer	43	SP-1751	5/8 Int. Tooth Lockwasher
13	SP-1665	1/4 Ext. Tooth Lockwasher	44	SP-1226	5/8-18 Hex. Jam Nut
14	SP-502	1/4-20 x 1/4 Rd. Hd. Screw	50	SP-7512	1/4-20 x 2-9/16 Rd. Hd. Screw
15	LTA-552	Coil Spring	51	SF-16	21/64 x 1-1/16 x 3/32 Washer
16	LTA-534-S	Guard, Incl:	52	422-04-104-0004	Spacer
17	LBS-63	Rivet	53	SP-1702	1/4 Lockwasher
18	960-02-012-1412	Nameplate	54	SP-1029	1/4-20 Hex. Nut
20	SP-560	#10-32 x 7/16 Rd. Hd. Screw	55	MS-61	Double End Box Wrench
21	LTA-541	Steel Bar	60	LTA-435	Splitter Mounting Bracket
22	SP-1203	#10-32 Hex Nut	61	LTA-436	Clamp Plate
24	SP-7564	#10-32 x 9/16 Rd. Hd. Screw	62	SP-1620	11/32 x 11/16 x 1/16 Washer
25	SP-1754	3/16 Int. Tooth Lockwasher	63	SP-608	5/16-18 x 7/8 Hex. Hd. Cap Screw
26	LTA-538	Guide Block	64	LTA-520	21/64 x 11/16 x 1/8 Washer
27	LTA-546	7/32 x 3/16 Stop Button	65	SP-635	5/16-18 x 2 Hex. Hd. Cap Screw
28	LTA-587	Splitter Blade	66	SP-608	5/16-18 x 7/8 Hex. Hd. Cap Screw
29	LTA-550	Kickback Finger			
30	LTA-548	Kickback Finger			
31	TCS-258	21/64 Shim Washer			